



Europe

Screen Count: **16,978**

4 Week Impressions: **9.3B+**



Belgium

Screen Count: **382**
4-wk Impressions: **400k**



Finland

Screen Count: **719**
4-wk Impressions: **3B+**



France:

Screen Count: **323**
4-wk Impressions: **20M+**



Germany:

Screen Count: **284**
4-wk Impressions: **25M+**



Italy:

Screen Count: **1.5K**
4-wk Impressions: **1.7B+**



Netherlands:

Screen Count: **3K**
4-wk Impressions: **13M+**



Portugal:

Screen Count: **1,270**
4-wk Impressions: **370M+**



Spain:

Screen Count: **1.5K**
4-wk Impressions: **1B+**



Sweden:

Screen Count: **1K**
4-wk Impressions: **10M+**



Switzerland:

Screen Count: **500**
4-wk Impressions: **47M+**



United Kingdom:

Screen Count: **6.5K**
4-wk Impressions: **1.7B+**

Publishers:





PLACE EXCHANGE

Clear Channel



Contact Name(s)
DV360.EMEA@placeexchange.com

Clear Channel - Belgium

Clear Channel Belgium, which is part of Clear Channel Europe, is a leading player in the out-of-home market in Belgium with **more than 200 billboards and digital screens.**

<https://www.clearchannel.be/>

CPM Range

\$20-25

Formats



Video



Display

City availability

Bruxelles



Monthly impressions

9M for a \$200k campaign

Deal types

PMP (Private Marketplace)

Available inventory

Street Furniture
Transit
Large Format Display

Targeting availability

Placement (Venue)
Dates
Day of Week
Dayparts





PLACE EXCHANGE

Clear Channel



Contact Name(s)
DV360.EMEA@placeexchange.com

Clear Channel - Finland

Clear Channel Finland, which is part of Clear Channel Europe, is a leading player in the out-of-home market enabling buyers to access premiere roadside digital screens in all major cities.

<https://www.clearchannel.fi/en/>

CPM Range

\$5-20

Formats



Video



Display

City availability

All major cities



Monthly impressions

20M for a \$200k campaign

Deal types

PMP (Private Marketplace)

Available inventory

Urban Panels
Retail

Targeting availability

Placement (Venue)
Dates
Day of Week
Dayparts





Clear Channel



Contact Name(s)

DV360.EMEA@placeexchange.com

Clear Channel France

Clear Channel France, which is part of Clear Channel Europe, is a leading player in the out-of-home market enabling buyers to access premiere digital screens in all major cities.

Supporting a diverse selection of venue types from **transit, retail, and street furniture** in top cities like Paris, Lyon, Nice and more.

<https://www.clearchannel.fr/>

CPM Range
\$15-25

Formats



Video



Display

City availability

Paris, Lyon, Nice,
Marseille, and more.

Monthly impressions

10M for a \$200k campaign

Deal types

PMP (Private Marketplace)

Available inventory

Retail
Street furniture
Transit

Targeting availability

Placement (Venue)
Dates
Day of Week
Dayparts





ECN France

Executive Channel Network (ECN) is a world leading digital-out-home office media publisher connecting brand partners with affluent audiences in premium office environments.

ECN delivers over 22 million monthly impressions across in Paris's business district, La Défense, and Lyon.

executivechannelnetwork.com/

CPM Range
\$15-16

Formats



Video



Display

City availability

Paris & Lyon

Monthly impressions

13M for a \$200k campaign

Deal types

PMP (Private Marketplace)

Available inventory

Offices

Targeting availability

Placement (Venue)

Dates

Day of Week

Dayparts



Contact Name(s)

DV360.EMEA@placeexchange.com





ECN Germany

Executive Channel Network (ECN) is a world leading digital-out-home office media publisher connecting brand partners with affluent audiences 25-54 in premium office environments.

ECN delivers over 24 million monthly impressions across in Germany's busiest business districts across Munich, Frankfurt, and Hamburg.

executivechannelnetwork.com/

CPM Range
\$15-16

Formats



Video



Display

City availability

München, Frankfurt & Hamburg

Monthly impressions

13M for a \$200k campaign

Deal types

PMP (Private Marketplace)

Available inventory

Offices

Targeting availability

Placement (Venue)

Dates

Day of Week

Dayparts



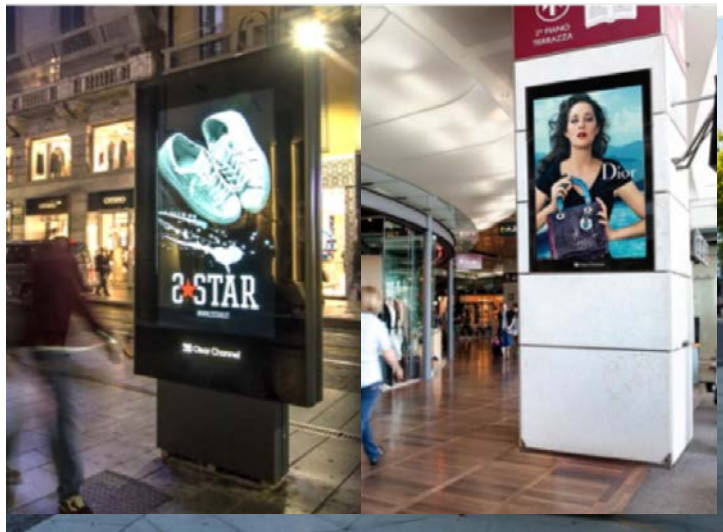
Contact Name(s)

DV360.EMEA@placeexchange.com





Clear Channel



Contact Name(s)

DV360.EMEA@placeexchange.com

Clear Channel - Italy

Clear Channel Italia is a leading Media Company in Italy since 1999. Clear Channel Italia, represents about 25% of the Italian outdoor market, which is revolutionizing the world of billboards, malls, and malls making it ever more flexible, measurable and creative for buyers to activate against.

<https://www.clearchannel.it/>

CPM Range
\$15-25

Formats



Video



Display

City availability

Rome, Milan, Florence, & more.

Monthly impressions

10M for a \$200k campaign

Deal types

PMP (Private Marketplace)

Available inventory

Retail
Street furniture
Transit

Targeting availability

Placement (Venue)
Dates
Day of Week
Dayparts





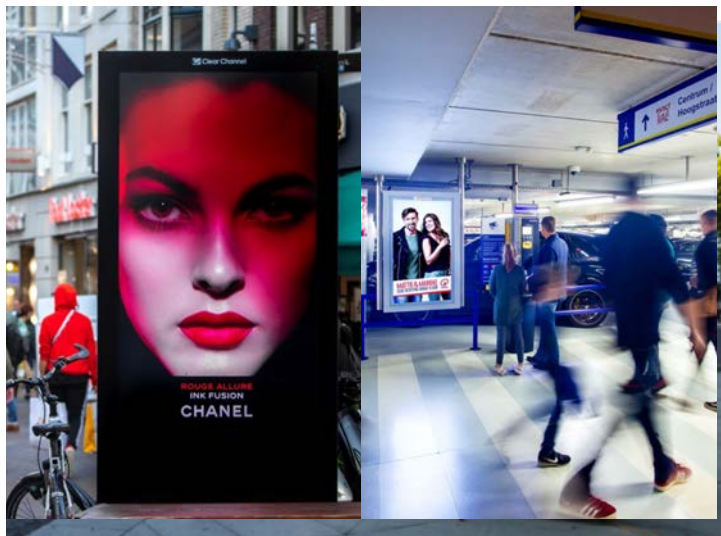
Clear Channel - Netherlands

Clear Channel Netherlands, which is part of Clear Channel Europe, is a leading player in the out-of-home market in Netherlands enabling buyers to access roadside, and transit screens.

Monthly impressions

10M for a \$200k campaign

Clear Channel



Contact Name(s)
DV360.EMEA@placeexchange.com

<https://www.clearchannel.nl/en/>

CPM Range
\$15-25

Formats



Video



Display

Deal types

PMP (Private Marketplace)

Available inventory

Street furniture
Transit
Higher Education

Targeting availability

Placement (Venue)
Dates
Day of Week
Dayparts

City availability

Amsterdam,
Rotterdam, Hoofddorp,
Utrecht, Zaanstad,
Maastricht, & more.





PLACE EXCHANGE



Contact Name(s)
DV360.EMEA@placeexchange.com

Global - Netherlands

Global is the market leader in Digital Out-of-Home. With a nationwide network of more than 3,000 digital screens at supermarkets, at petrol stations, in shopping centres, on the street and along the road, we reach the whole of the Netherlands.

global.com/nl/out-of-home

CPM Range
\$5-25

Formats



Video



Display

City availability

Amsterdam,
Rotterdam, Hoofddorp,
Utrecht, Zaanstad,
Maastricht, & more.



Monthly impressions

**20M for a \$200k
campaign**

Deal types

PMP (Private Marketplace)

Available inventory

Street furniture
Transit
Higher Education

Targeting availability

Placement (Venue)
Dates
Day of Week
Dayparts

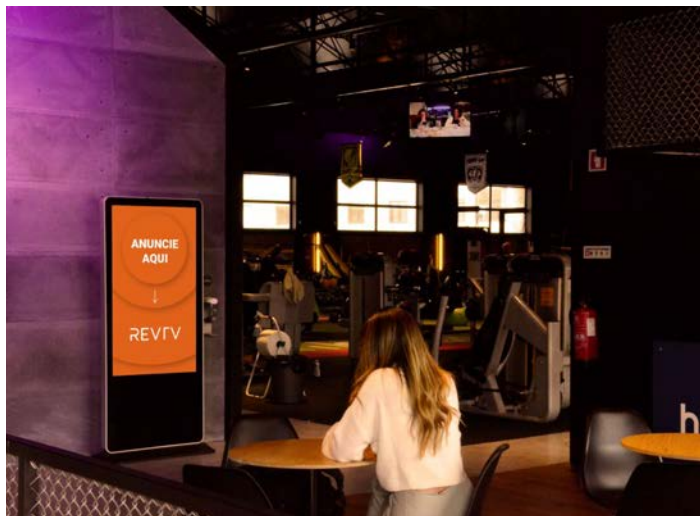




PLACE EXCHANGE



REVTV



Contact Name(s)

DV360.EMEA@placeexchange.com

RevTV - Portugal

evTV works closely with brands and businesses to build relevant brand communication and increased awareness. RevTV promotes campaigns and ads targeting specific niche markets and helps businesses reaching the right audience.

revtv.pt/rede-revtv/

CPM Range

\$5-6

Formats



Video



Display

City availability

Lisbon, Porto, Lagos, and more.

Monthly impressions

98k for a \$50k campaign

Deal types

PMP (Private Marketplace)

Available inventory

Gyms

Targeting availability

Placement (Venue)
Dates
Day of Week
Dayparts





PLACE EXCHANGE



TuMedio - Portugal

TuMedio has strategically placed over 15 eye-level digital screens serving to a diverse audience of both business professionals and consumers at leisure. Located in Portugal's most densely populated cities such as Lisbon, Porto, and Pontevedra

<https://tumedio.es>

CPM Range

\$5-6

Formats



Video



Display

City availability

Lisbon, Porto, Lagos, and more.

Monthly impressions

98k for a \$50k campaign

Deal types

PMP (Private Marketplace)

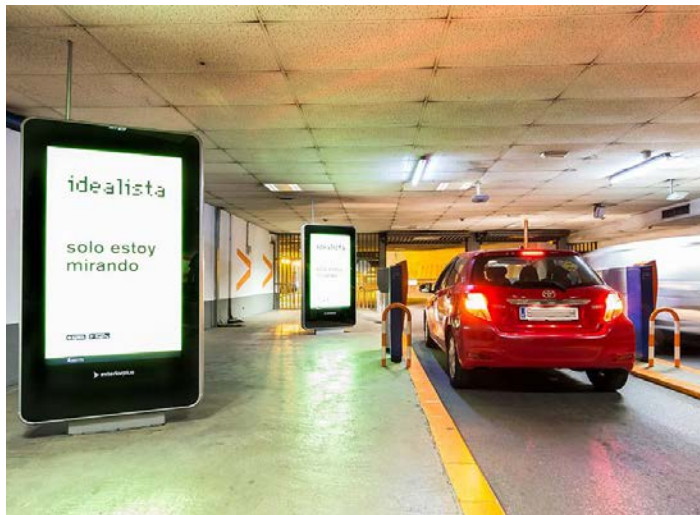
Available inventory

Street furniture

Targeting availability

Placement (Venue)
Dates
Day of Week
Dayparts

tumedio



Contact Name(s)

DV360.EMEA@placeexchange.com





PLACE EXCHANGE



Clear Channel



Contact Name(s)

DV360.EMEA@placeexchange.com

Clear Channel Spain

CCO-Spain installed Spain's first digital screen in 2008 and by 2016 became **the largest circuit of street furniture in Europe**.

A circuit of more than 400 screens that has revolutionized the outdoor environment in the cities of Madrid, Barcelona, Malaga and Seville.

<https://www.clearchannel.es>

CPM Range
\$10-18

Formats



Video



Display

City availability

Barcelona, Madrid,
Malaga, and Seville

Monthly impressions

15M for a \$200k campaign

Deal types

PMP (Private Marketplace)

Available inventory

Street furniture

Targeting availability

Placement (Venue)

Dates

Day of Week

Dayparts





PLACE EXCHANGE



Contact Name(s)
DV360.EMEA@placeexchange.com

Deneva - Spain

Deneva smart signage solution offers personalised and effective experiences at the point of sale for your consumer. Deneva improves the effectiveness of brand message by reaching the customers in high intent moments and associating your brand to ideas such as **modernity, innovation and technology**.

<https://www.denevads.es/en>

CPM Range

\$4-10

Formats



Video



Display

City availability

Barcelona, Valencia,
Madrid, Málaga, Seville,
and more

Monthly impressions

**28M for a \$200k
campaign**

Deal types

PMP (Private Marketplace)

Available inventory

Retail

Targeting availability

Placement (Venue)
Dates
Day of Week
Dayparts





PLACE EXCHANGE



TuMedio - Spain

TuMedio helps brands grow, no matter the size, whether it's a local business or a multinational brand. TuMedio has place eye-level digital screen across more than 75 Spanish cities such as Madrid, Barcelona, Seville, and more.

<https://tumedio.es>

CPM Range

\$5-8

Formats



Video



Display

City availability

Barcelona, Valencia, Madrid, Málaga, Seville, and more

Monthly impressions

30M for a \$200k campaign

Deal types

PMP (Private Marketplace)

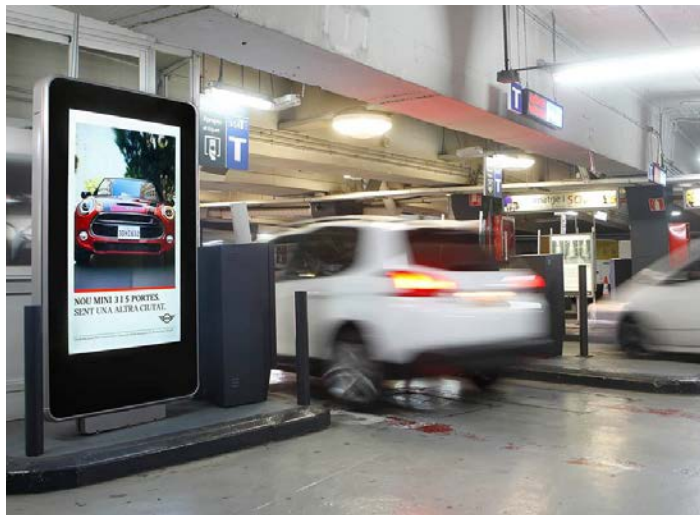
Available inventory

Street furniture
Parking Garages

Targeting availability

Placement (Venue)
Dates
Day of Week
Dayparts

tumedio



Contact Name(s)

DV360.EMEA@placeexchange.com





PLACE EXCHANGE



Clear Channel - Sweden

Clear Channel Sweden, which is part of Clear Channel Europe, is a leading player in the out-of-home market in Sweden with more than 1,200+ digital screens across all major cities.

Monthly impressions

10M for a \$200k campaign

Clear Channel



Contact Name(s)
DV360.EMEA@placeexchange.com

<https://www.clearchannel.se/en/>

CPM Range
\$15-25

Formats



Video



Display

City availability

Stockholm, Gothenburg,
Uppsala, & more.

Deal types

PMP (Private Marketplace)

Available inventory

Street furniture
Transit
Retail

Targeting availability

Placement (Venue)
Dates
Day of Week
Dayparts





Clear Channel



Contact Name(s)
DV360.EMEA@placeexchange.com

Clear Channel - Switzerland

Clear Channel Switzerland offers digital screens in Zurich and the exclusive Digital PLAY offer in Zurich's Bahnhofstrasse.

Today, the digital portfolio comprises around 182 screens in five cities and 17 shopping centres. Added to these are 33 screens in the Swiss Lounges.

<https://www.clearchannel.ch/>

CPM Range
\$11-37

Formats



Video



Display

City availability

Zurich, Bern, Basel, Lucerne, Locarno, Lausanne, and more.

Monthly impressions

8M for a \$200k campaign

Deal types

PMP (Private Marketplace)

Available inventory

Street furniture
Transit
Retail

Targeting availability

Placement (Venue)
Dates
Day of Week
Dayparts





PLACE EXCHANGE



ACMS (SFD)

ACMS (All city media solutions) has strategically positioned premium screen across the UK in chicken shops. ACMS offers advertisers the opportunity to serve messaging to a diverse audience when they at leisure and highly susceptible to brand messaging.

Monthly impressions

13M for a \$200k campaign

Deal types

PMP (Private Marketplace)

Available inventory

Small format display

Targeting availability

Placement (Venue)

Dates

Day of Week

Dayparts



www.allcitymediasolutions.com

CPM Range

\$15-20

Formats



Video



Display

City availability

34 UK cities reached including London, Manchester, Liverpool, & more

Contact Name(s)

DV360.EMEA@placeexchange.com





PLACE EXCHANGE



Alight Media (LFD)

Alight Media operates over 200 large-format digital roadside billboards in over 100 towns and cities across the UK.

Monthly impressions

13M for a \$200k campaign

Alight
MEDIA



Contact Name(s)
DV360.EMEA@placeexchange.com

www.alightmedia.com

CPM Range

\$15-20

Formats



Display

City availability

34 UK cities reached including London, Manchester, Liverpool, & more

Deal types

PMP (Private Marketplace)

Available inventory

Large format display

Targeting availability

Placement (Venue)
Dates
Day of Week
Dayparts





Contact Name(s)
DV360.EMEA@placeexchange.com

Atmosphere TV

Atmosphere specializes in streaming TV content at businesses to engage consumers. Screens are placed in a diverse set of venues including restaurants, bars, sports facilities, offices, gyms, and other venue types.

www.atmosphere.tv

CPM Range

\$8-12

Formats



Video



Display

City availability

London

Monthly impressions

20M for a \$200k campaign

Deal types

PMP (Private Marketplace)

Available inventory

Screen/TV monitor

Targeting availability

Placement (Venue)
Dates
Day of Week
Dayparts





PLACE EXCHANGE

Alight Media (LFD)

Blue Billboard is a fast-growing dooh network reaching across the South East, UK. Their network offers place based screens, located inside business premises.

Monthly impressions

98k for a \$50k campaign



Contact Name(s)
DV360.EMEA@placeexchange.com

bluebillboard.co.uk

CPM Range

\$5-7

Formats



Display

City availability

4 UK cities reached including Worthing, Brighton, and more.

Deal types

PMP (Private Marketplace)

Available inventory

Screen/TV monitor

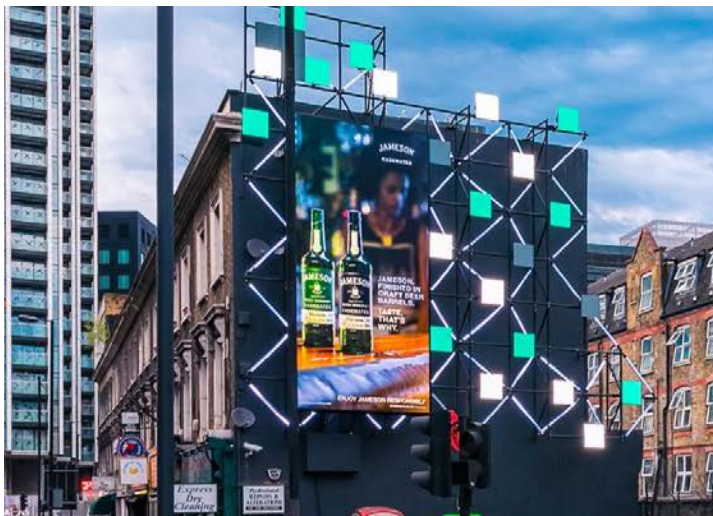
Targeting availability

Placement (Venue)
Dates
Day of Week
Dayparts





PLACE EXCHANGE



Contact Name(s)
DV360.EMEA@placeexchange.com

Alight Media (LFD)

We are a media owner dedicated to the premium sector of the large format outdoor market. Utilising the very best locations, we provide a digital platform located to ensure the most powerful displays within their environment. Connecting audiences to the brands they love through the power of outdoor.

www.cityoutdoormedia.com

CPM Range

\$10-20

Formats



Display

City availability

London, Newcastle,
Leeds, Manchester, &
Sheffield

Monthly impressions

**13M for a \$200k
campaign**

Deal types

PMP (Private Marketplace)

Available inventory

Large format display

Targeting availability

Placement (Venue)
Dates
Day of Week
Dayparts





PLACE EXCHANGE



Clear Channel



Contact Name(s)
DV360.EMEA@placeexchange.com

Clear Channel UK (LFD)

Clear Channel UK has a large portfolio of advertising formats across multiple environments in some of the UK's busiest vehicular and walking locations.

CCO UK has the **largest roadside network in the UK.**

www.clearchannel.co.uk

CPM Range
\$16-22

Formats



Display

City availability

147 UK cities reached including London, Liverpool, Birmingham & more.

Monthly impressions

16M for a \$200k campaign

Deal types

PMP (Private Marketplace)

Available inventory

Large format display

Targeting availability

Placement (Venue)
Dates
Day of Week
Dayparts





PLACE EXCHANGE



Clear Channel UK (SFD)

Clear Channel UK has a large portfolio of advertising formats across multiple environments from phone box posters to HD digital screens located in pubs and bars.

Monthly impressions

16M for a \$200k campaign

Clear Channel



Contact Name(s)
DV360.EMEA@placeexchange.com

www.clearchannel.co.uk

CPM Range
\$10-16

Formats



Video



Display

City availability

147 UK cities reached including London, Liverpool, Birmingham & more.

Deal types

PMP (Private Marketplace)

Available inventory

Street furniture
Retail

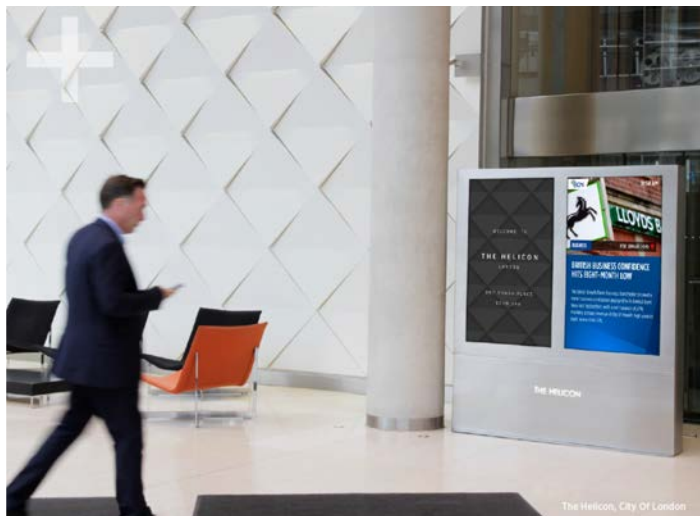
Targeting availability

Placement (Venue)
Dates
Day of Week
Dayparts





PLACE EXCHANGE



Contact Name(s)
DV360.EMEA@placeexchange.com

Executive Channel Network

Executive Channel Network (ECN) is a world leading digital OOH office media publisher connecting brand partners with affluent audiences in **premium office environments**.

194+ digital screens located in the city of London's high traffic areas including Canary Wharf, London Bridge, and the West End.

www.executivechannelnetwork.com

CPM Range

\$12-16

Formats



Video



Display

City availability

London

Monthly impressions

14M for a \$200k campaign

Deal types

PMP (Private Marketplace)

Available inventory

Eye level kiosks
Office buildings

Targeting availability

Placement (Venue)
Dates
Day of Week
Dayparts





PLACE EXCHANGE



Contact Name(s)
DV360.EMEA@placeexchange.com

IQOOH (LFD)

iQ is the UK's newest and fastest growing out-of-home (OOH) challenger brand. iQ delivers cost-effective broadcast roadside digital, allowing advertisers to reach audiences at scale.

www.iq.media

CPM Range

\$10-20

Formats



Video



Display

City availability

34 UK cities reached including London, Manchester, Liverpool, & more

Monthly impressions

10M for a \$200k campaign

Deal types

PMP (Private Marketplace)

Available inventory

Large Format Display

Targeting availability

Placement (Venue)
Dates
Day of Week
Dayparts





PLACE EXCHANGE



London Lites



Contact Name(s)
DV360.EMEA@placeexchange.com

London Lites (LFD)

London Lites provides high quality, cost effective, large format display digital out-of-home screens in central London locations.

London Lites helps brands, large or small, connect with Londoner's and light up London.

www.londonlites.co.uk

CPM Range

\$16-21

Formats



Display

City availability

London

Monthly impressions

13M for a \$200k campaign

Deal types

PMP (Private Marketplace)

Available inventory

Large format display

Targeting availability

Placement (Venue)
Dates
Day of Week
Dayparts





London Lites



Contact Name(s)
DV360.EMEA@placeexchange.com

London Lites (SFD)

London Lites provides high quality, cost effective, small format display out-of-home screens in central London locations.

London Lites helps brands, large or small, connect with Londoner's and light up London.

www.londonlites.co.uk

CPM Range

\$10-16

Formats



Video



Display

City availability

London

Monthly impressions

13M for a \$200k campaign

Deal types

PMP (Private Marketplace)

Available inventory

Street furniture
Retail

Targeting availability

Placement (Venue)
Dates
Day of Week
Dayparts





MASS MEDIA



Contact Name(s)
DV360.EMEA@placeexchange.com

Mass Media

Mass Media Outdoor operate a network of digital only screens both roadside and in shopping centres & precincts. Their strategy is to build a network of more eco friendly digital billboards on the main arterial routes in and out of City/Town centres to catch the migrating audience.

www.mass-media.co.uk

CPM Range

\$16-21

Formats



Video



Display

City availability

5 UK cities including London,, Seaburn, Newcastle, & more

Monthly impressions

13M for a \$200k campaign

Deal types

PMP (Private Marketplace)

Available inventory

Large format display
Eye level kiosk
Retail

Targeting availability

Placement (Venue)
Dates
Day of Week
Dayparts

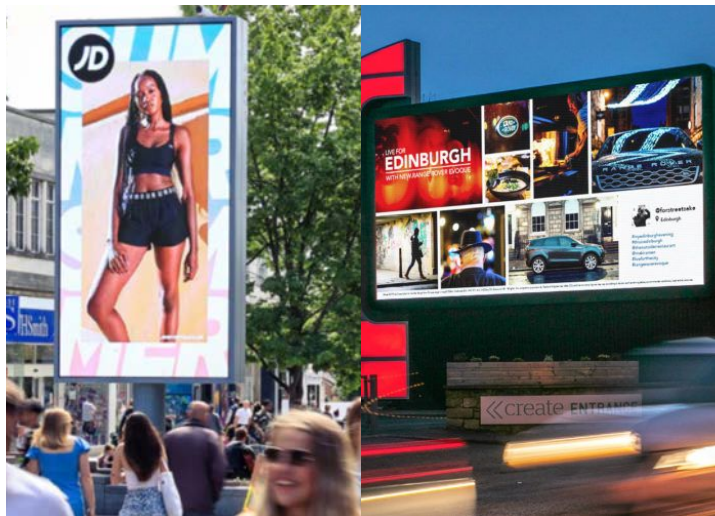




PLACE EXCHANGE



OO
OCEAN



Contact Name(s)
DV360.EMEA@placeexchange.com

Ocean Outdoor

Ocean operates the UK's most prestigious out of home advertising locations, their network includes 100+ Spectacular Large format screens in city centres and high traffic footfall zones, billboards and retail displays.

www.oceanoutdoor.com

CPM Range

\$16-22

Formats



Video



Display

City availability

All major UK cities including Birmingham, Manchester, Canary Wharf, London and St James Quarter, Edinburgh & more

Monthly impressions

18M for a \$200k campaign

Deal types

PMP (Private Marketplace)

Available inventory

Large format display
Eye level kiosk
Retail

Targeting availability

Placement (Venue)
Dates
Day of Week
Dayparts





Pixology Outdoor

Pixology Outdoor specialise in roadside 75" portrait digital screens throughout the city of Swansea, with the geographic spread of the inventory being spread across the city centre and suburbs. The advertising opportunities are on major highways, close to transport and transit hubs, in the heart of the city centre locations.

www.pixologyoutdoor.com

CPM Range

\$5-20

Formats



Video



Display

City availability

London

Monthly impressions

20M for a \$200k campaign

Deal types

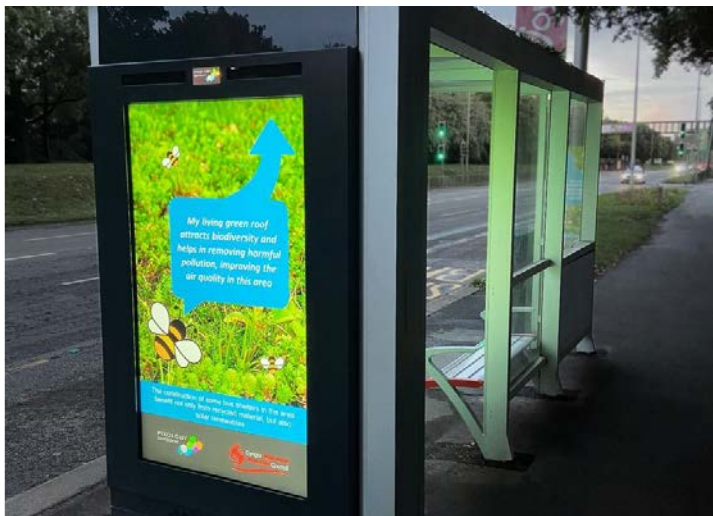
PMP (Private Marketplace)

Available inventory

Eye level kiosk
Transit

Targeting availability

Placement (Venue)
Dates
Day of Week
Dayparts



Contact Name(s)

DV360.EMEA@placeexchange.com

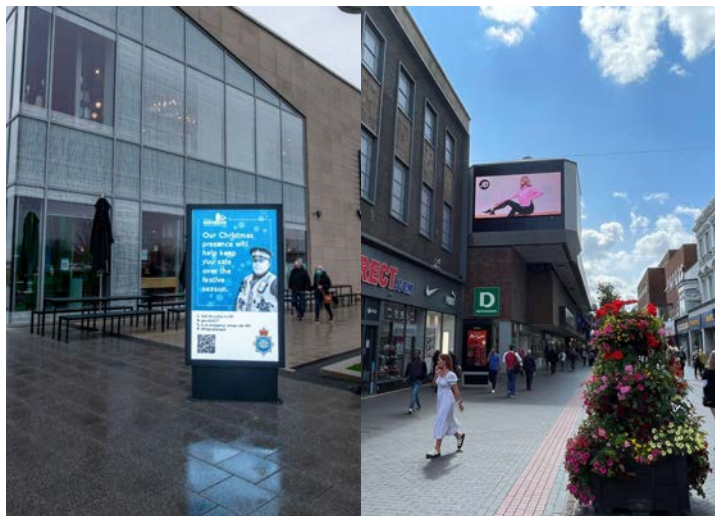




PLACE EXCHANGE



smartoutdoor



Contact Name(s)
DV360.EMEA@placeexchange.com

Smart Outdoor Media

Smart Outdoor's digital network comprises hundreds of regional large format media assets such as the Tyne Tunnel and Sunderland digital screens, plus a national network of 250 small format displays at the eye level .

www.smartoutdoor.co.uk

CPM Range

\$4-17

Formats



Video



Display

City availability

68 UK cities including Sunderland, Seaburn, Newcastle, & more

Monthly impressions

21M for a \$200k campaign

Deal types

PMP (Private Marketplace)

Available inventory

Large format display
Eye level kiosk
Retail

Targeting availability

Placement (Venue)
Dates
Day of Week
Dayparts





PLACE EXCHANGE



ZOOM
MEDIA



Contact Name(s)
DV360.EMEA@placeexchange.com

Zoom - Gym TV

Zoom - UK owns and operates GymTV, the largest gym-based TV network across the United Kingdom. Zoom - UK is located in over 500+ venues and offers brands the opportunity to connect with active lifestyle consumers called Generation Active.

www.zoommedia.com/uk/

CPM Range

\$5-19

Formats



Video



Display

City availability

All major cities in the UK

Monthly impressions

20M for a \$200k campaign

Deal types

PMP (Private Marketplace)

Available inventory

Gyms - TV/monitors

Targeting availability

Placement (Venue)
Dates
Day of Week
Dayparts

